
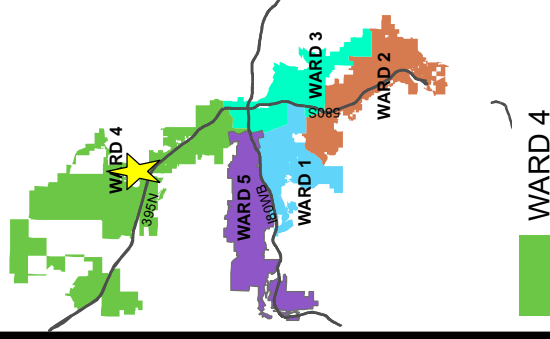


AREA MAP

LDC23-00005

(Highland Zoning
Map Amendment)

Subject Site ► 



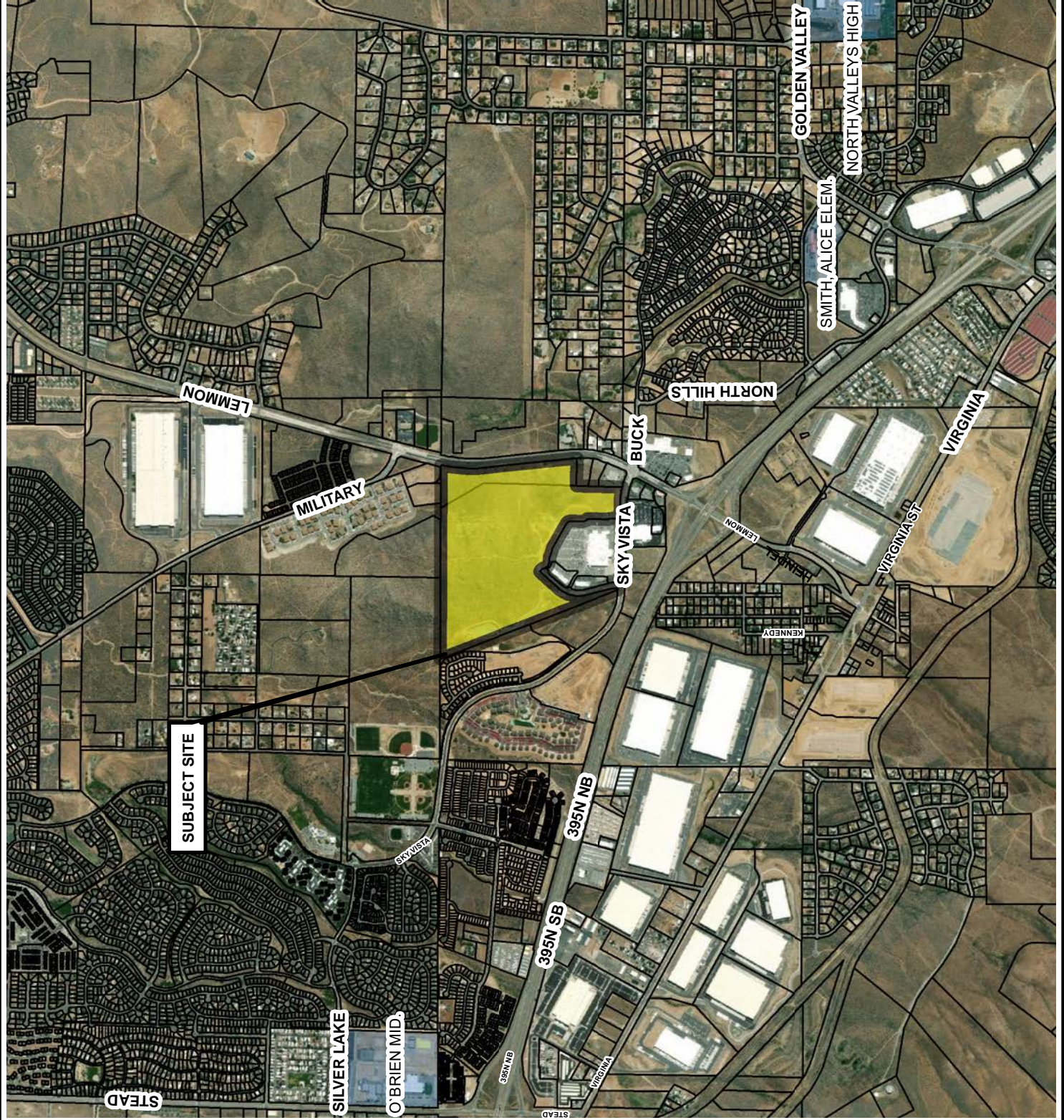
Development
Services
Department



The information herein
is approximate and
is intended for display
purposes only.

Date: August 2022


Scale: 1 inch = 2,000 feet

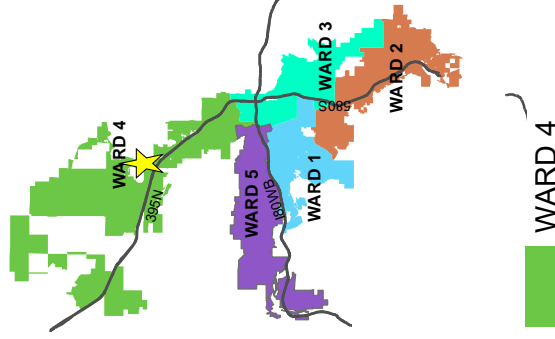


VICINITY MAP

LDC23-00005

(Highland Zoning
Map Amendment)

Subject Site ► 

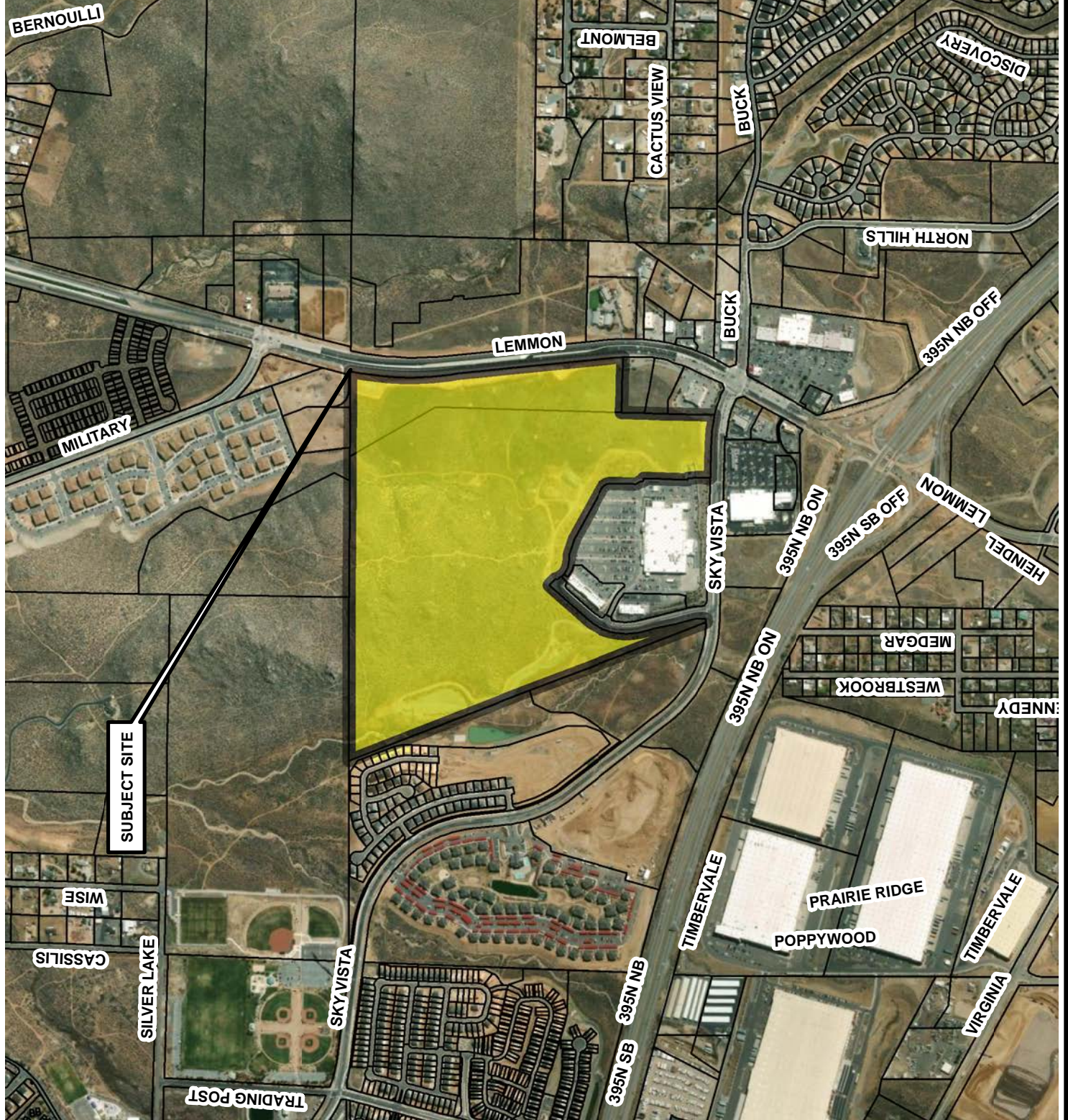


Development
Services
Department

The information herein
is approximate and
is intended for display
purposes only.

Date: August 2022


Scale: 1 Inch = 1,000 feet

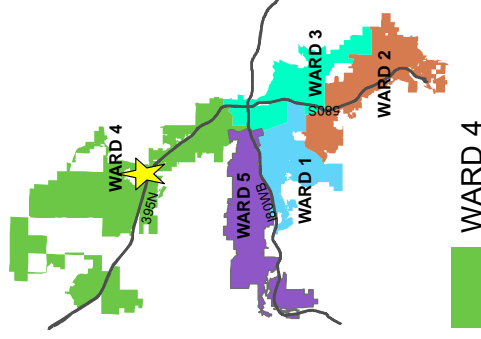


MASTER PLAN MAP

LDC23-00005

(Highland Zoning
Map Amendment)

Subject Site ► 

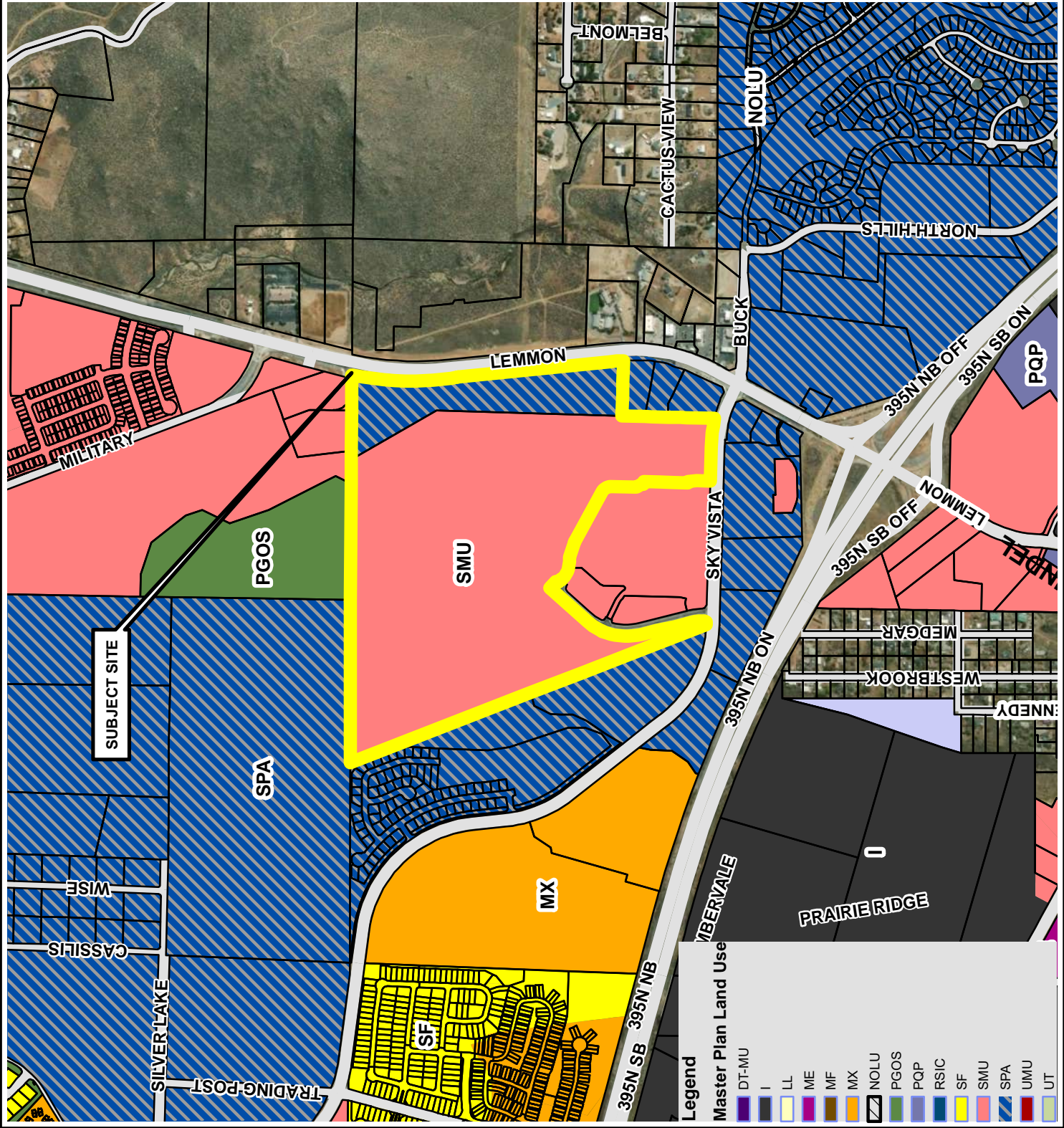


Development
Services
Department

The information herein
is approximate and
is intended for display
purposes only.

Date: August 2022

Scale: 1 inch = 1,000 feet



Legend

Master Plan Land Use

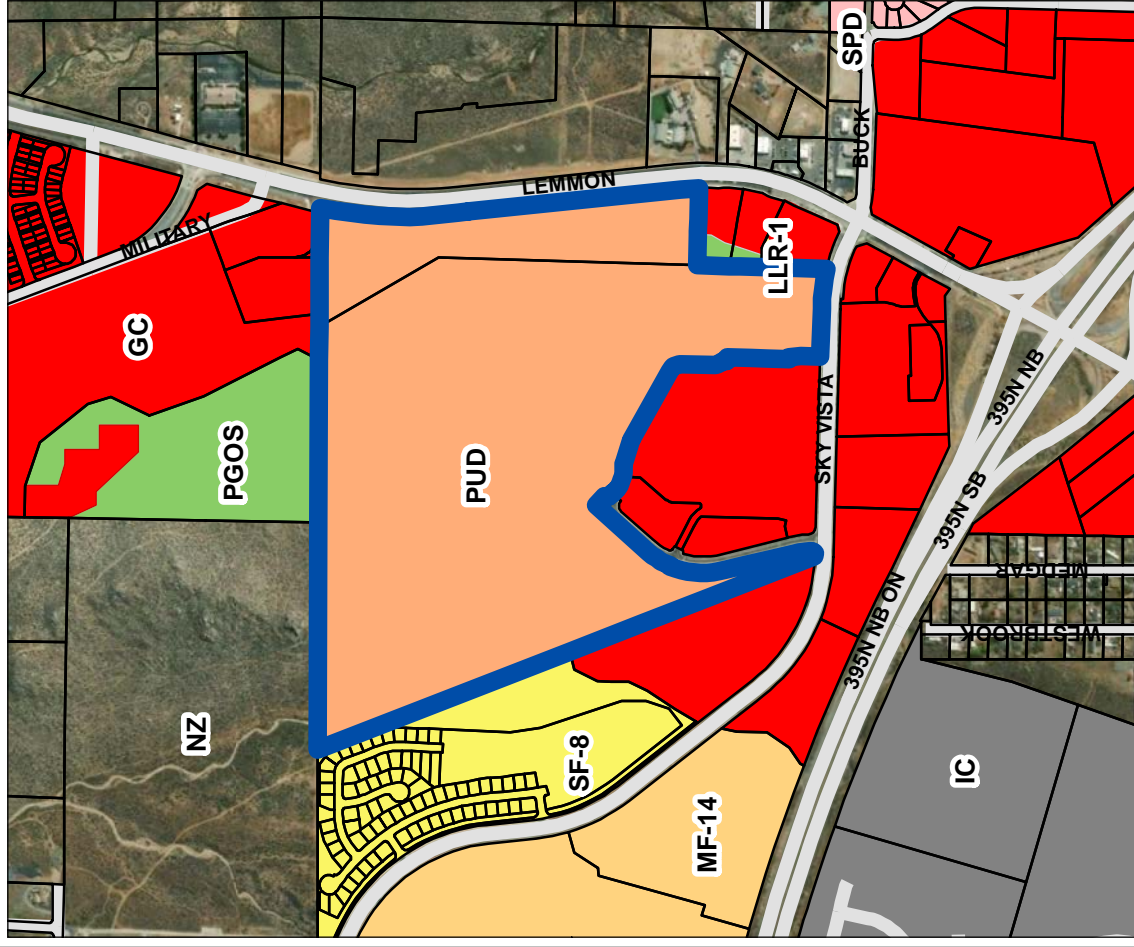
- DT-MU
- I
- LL
- ME
- MF
- MX
- NOLU
- PGOS
- PQP
- RSIC
- SF
- SMU
- SPA
- UMU
- UT

ZONING MAP

LDC23-00005 (Highland Zoning Map Amendment)

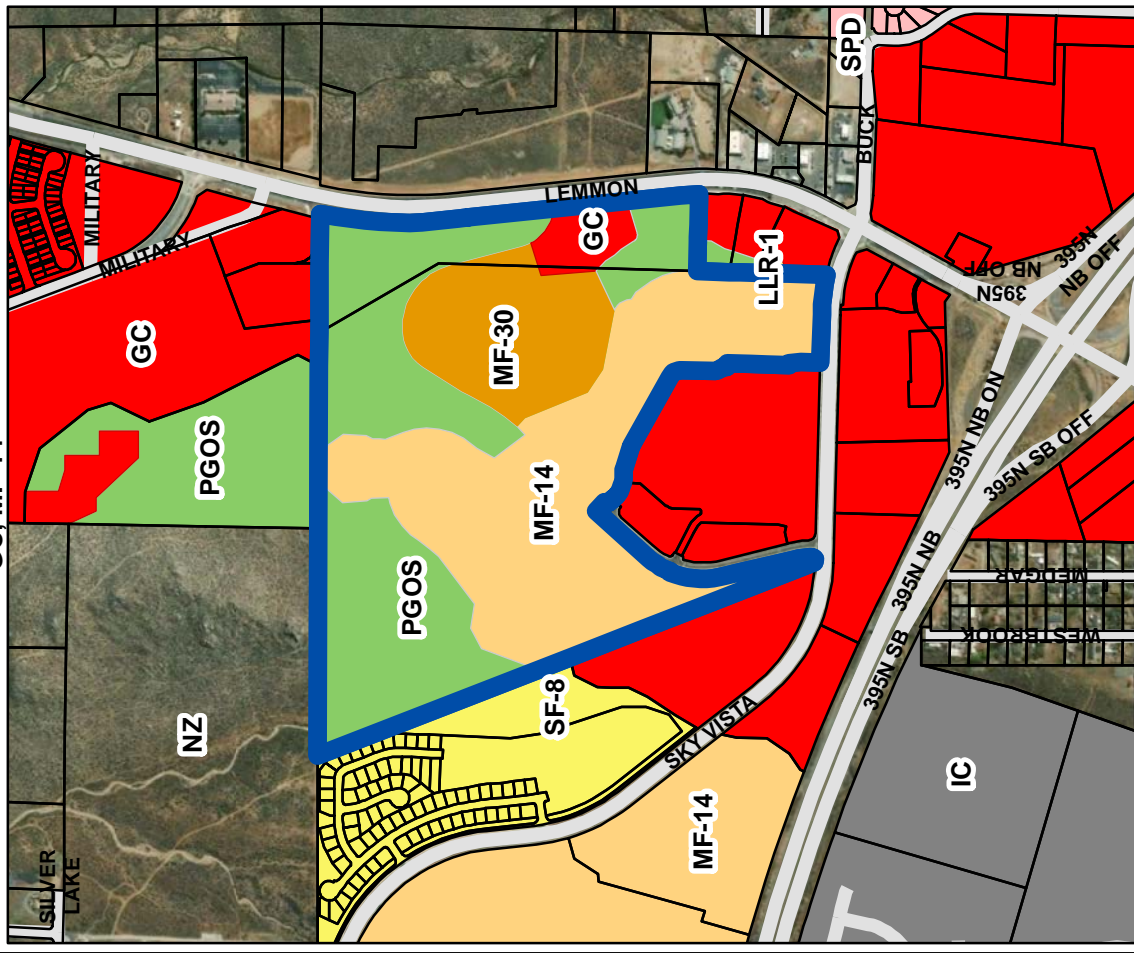
Existing Zoning: PUD

Subject Site



Proposed Zoning: PGOS, MF-30, GC, MF-14

Subject Site



Zoning Designations



PUD	MF-14	IC	SPD
SF-8	LLR-1	PGOS	MF-30

